



The PT-80 is a world-class rubber track loader that digs hard and travels fast. Multi-level suspension maximizes traction and gives a smooth and stable ride. A two-speed drive system lets you choose between fast travel and high torque. Auxiliary hydraulics include powerful high flow and variable control low flow. The operator station is spacious and can be customized with many options.



PT-80 **RUBBER TRACK** **LOADER**

The PT-80 is a purpose-built rubber track loader with careful attention to geometry and distribution of machine weight. The result is exceptional machine stability and performance within a compact and maneuverable package.

An independent, multi-level suspension helps keep the PT-80's tracks firmly on the ground. Four wheel carriages with 16 bogie wheels per track flex independently to maximize ground contact. The result is superior traction and minimal ground pressure to keep you productive where other machines cannot work at all.

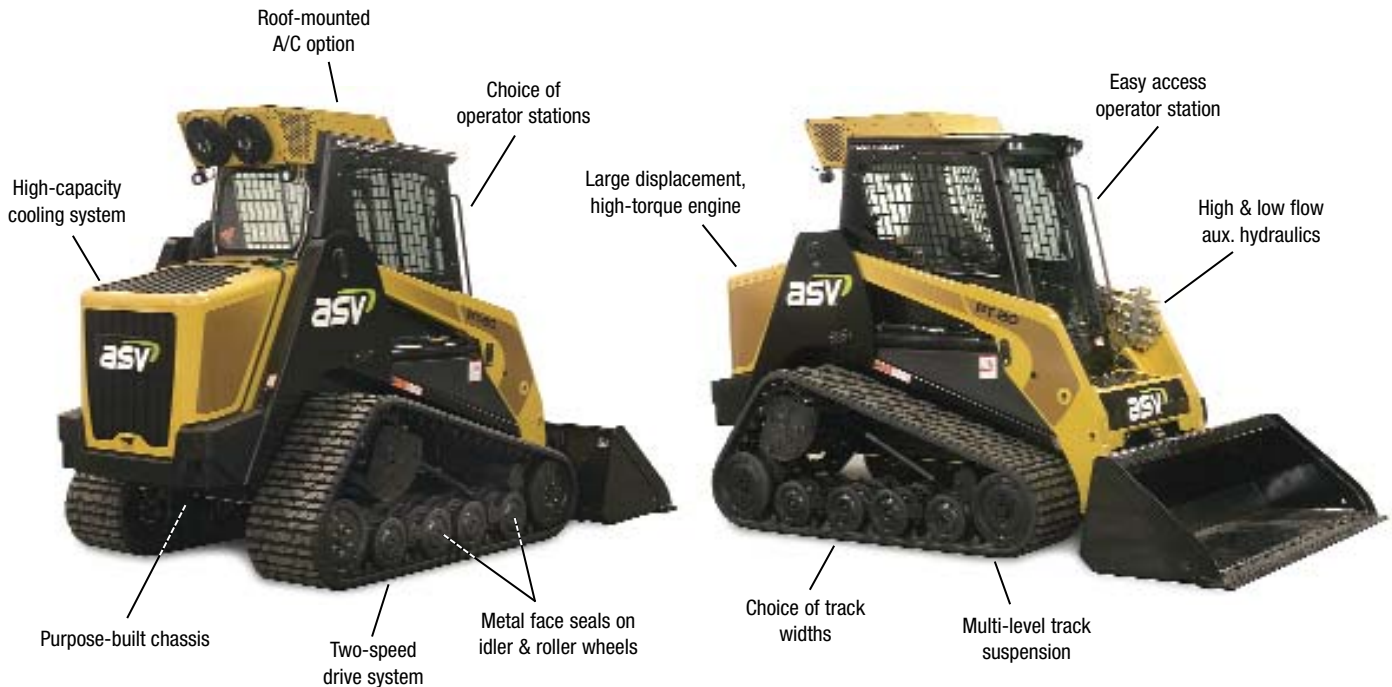


The PT-80 lets you choose between the standard 18-inch (457 mm) rubber tracks or optional 20-inch (508 mm) wide tracks. The standard tracks let you maneuver faster and in more confined areas, whereas wider optional tracks give more flotation.

For maximum undercarriage durability, all idler wheel bearings are protected by long-wearing metal face seals like those used on most steel track dozers. A unique drive sprocket uses free-turning sleeves for efficient low-friction transfer of drive power to the PT-80's all-rubber tracks. The result is smooth track drive with exceptional response. The PT-80's two-speed direct drive transmission lets you select low for maximum torque or high for fastest travel. A button on the joystick lets the operator shift effortlessly between speed ranges.

The PT-80's state-of-the-art auxiliary hydraulic system makes it easy to get more done. It comes standard with bi-directional high flow for brushcutting, snowblowing and more. Low flow hydraulics feature variable speed operation for precise control of attachment functions. Quick-connect hydraulic fittings are standard, along with a supplemental electrical connection for attachments.

The PT-80 comes with a spacious, comfortable operator station. The wide front opening allows easy access and can be outfitted with an optional slide-up door that



allows operation with the door open or closed. An adjustable contour seat lets the operator stay productive throughout the day. The optional air conditioner is a high-efficiency unit that mounts on the roof of the operator station and blows cool air down to keep the operator comfortable, even in the hottest conditions.

The PT-80 is outfitted with state-of-the-art pilot-operated joystick controls that give precise and low-effort control of all machine functions. Auxiliary hydraulic and electric functions are built into the joysticks for quick and easy control of all attachments.

The PT-80's operator station also includes conveniences like a standard 12-volt DC power port and multiple storage areas. It can be customized with a choice of cab enclosures, an adjustable suspension seat, sliding side windows and more.

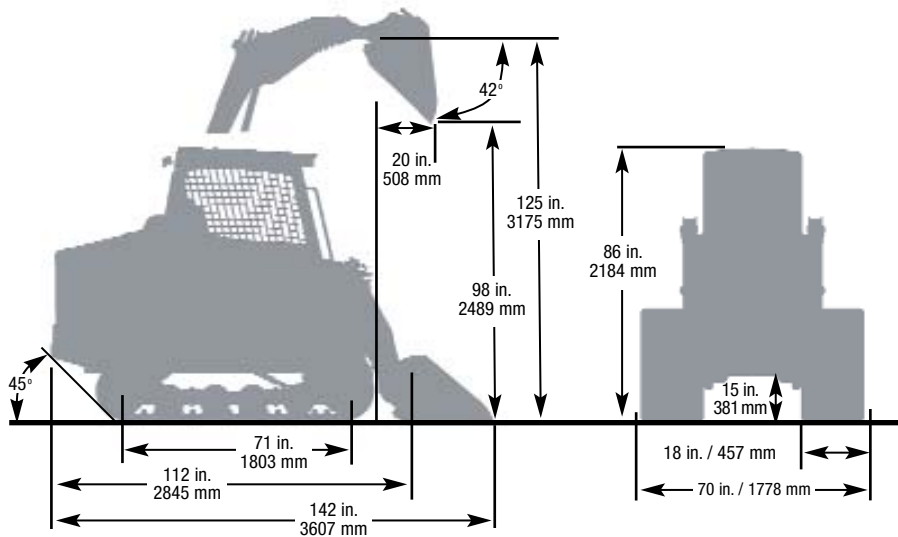
STANDARD & OPTIONAL EQUIPMENT

STANDARD

- Air cleaner, dual stage
- Attachment control, electric
- Battery, 925 CCA
- Back-up alarm
- DC Outlet, 12V
- Gauges: fuel, coolant temp., hyd. temp., hour meter, tachometer, battery voltage, oil pressure,
- Hitch receiver
- Lights, halogen, 4 front, 2 rear
- Pilot joystick controls
- Quick-attach, manual
- ROPS/FOPS canopy w/poly roof panel
- Throttle, foot-operated
- Tracks, 18 inch (457 mm) wide
- Alternator, 90-amp
- Auxiliary hydraulic system, LOW / HIGH flow
- Brake, parking
- Diesel engine, Perkins 404C-22T, turbo
- Indicators: high, low, glow, park
- Heater, engine block
- Quick-attach, hydraulic
- Lap bar/arm rest
- Operator presence switch
- Power management system
- Quick-connect hydraulic fittings
- Seat belt, 3-inch (76 mm) wide
- Tie-down loops, front/rear

OPTIONAL

- Air conditioning
- Beacon, rotating
- Brush guard
- Bucket positioning, selectable
- Cab enclosure with wiper
- Front door, polycarbonate, slide-up
- Heater
- Horn
- Quick-attach, hydraulic
- Suspension seat
- Tracks, 20-inch (508 mm) wide
- Window kit, side, sliding
- Wiper, door



PT-80 SPECIFICATIONS & DIMENSIONS

WEIGHTS:

Operating weight:	8,972 lb. / 4070 kg.
Shipping weight, w/out bucket:	8,060 lb. / 3656 kg.
Ground pressure @ operating weight:	3.5 psi / 24.1 kPa
Ground pressure @ shipping weight:	3.15 psi / 21.7 kPa

TRACKS:

Track width:	18 in. / 457 mm
Track length, on ground:	71 in. / 1803 mm
Ground contact area:	2,556 in ² / 1.65 m ²

AUXILIARY HYDRAULICS:

Low flow, variable:	0 - 20 gpm / 0 - 75.7 lpm
High flow, maximum:	30 gpm / 113.6 lpm
Pressure:	3,000 psi / 20 670 kPa

ENGINE:

Type:	Perkins 804C-33T, turbocharged diesel
Displacement:	202 in. ³ / 3.3 L
Gross power @ 2600 rpm:	80.5 hp / 60 kW
Torque, peak:	186 ft-lb / 253 Nm

OPERATING SPECIFICATIONS:

Tipping load:	6,200 lb. / 2812 kg
Operating capacity 50% tip load*:	3,100 lb. / 1406 kg
Operating capacity 35% tip load*:	2,170 lb. / 984 kg
Travel speed, low:	0 - 6 mph / 9.7 kph
Travel speed, high:	0 - 11 mph / 17.7 kph

SERVICE REFILL CAPACITIES:

Fuel tank:	18 gal. / 68 L
Hydraulic tank:	21 gal. / 79 L
Engine coolant:	3 gal. / 12 L
Engine oil, inc. filter:	9 qts. / 8.52 L

* SAE J818 standards define operating capacities of rubber-tired skid steers (50% tipping load) and tracked loaders (35% tipping load). There are no standards defining the operating capacity of machines equipped with a suspended undercarriage or machines with rubber tracks.

Machines featured in photos may include additional equipment.

Specifications are subject to change without notice.